

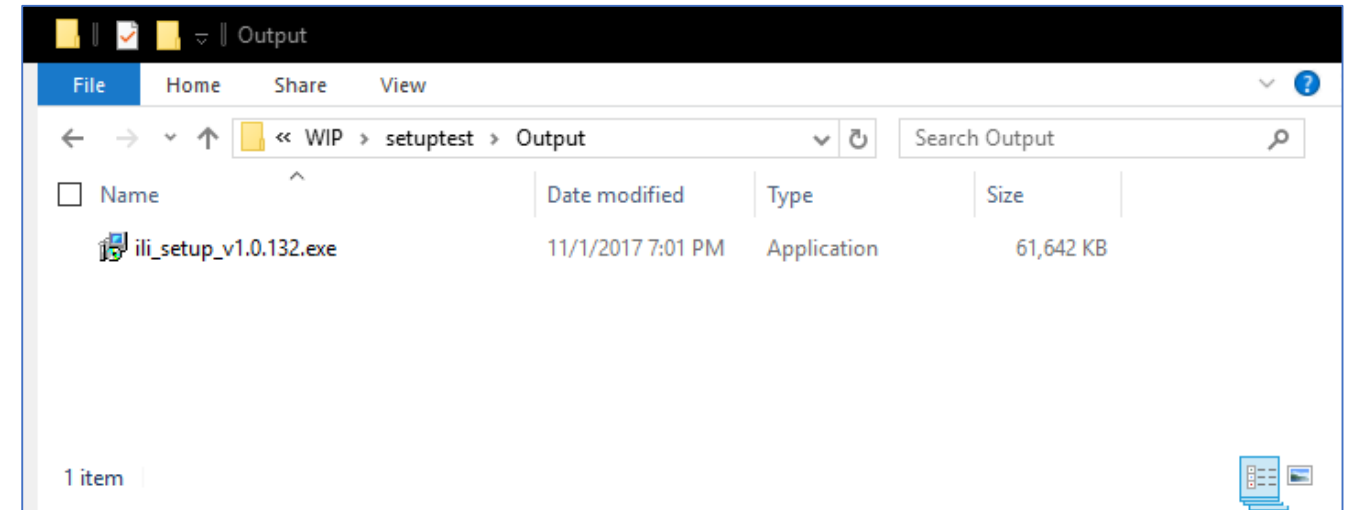
# How to install ili app on Windows

## 1. Connect your ili to your PC

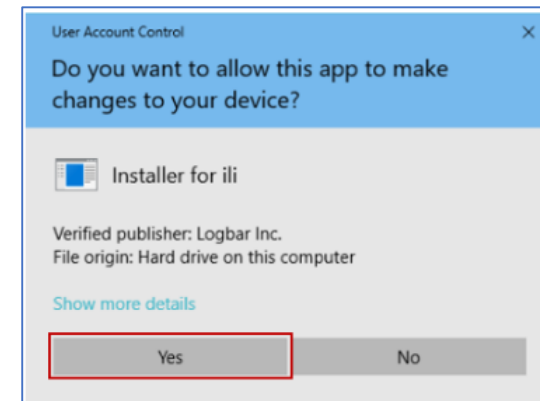
Use the USB cable included in the ili package or some data transferring USB cable.

## 2. Install ili app

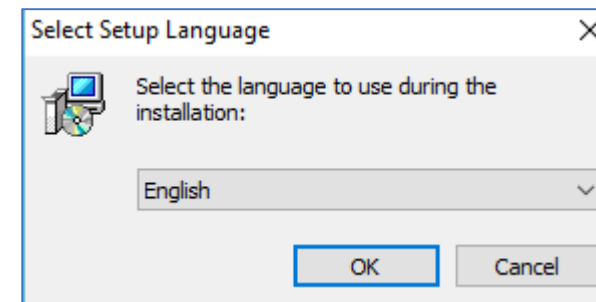
Run ili\_setup\_<**VERSION**>.exe and follow the instruction. (**VERSION** will be the version number of the app. e.g. ili\_setup\_v1.0.132.exe)



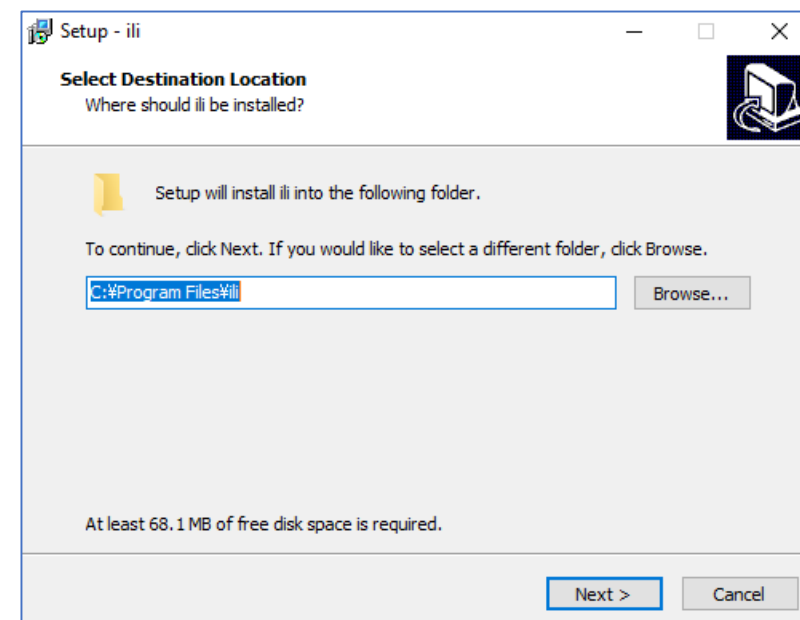
You might see the User Account Control screen. Click Yes and on this screen.



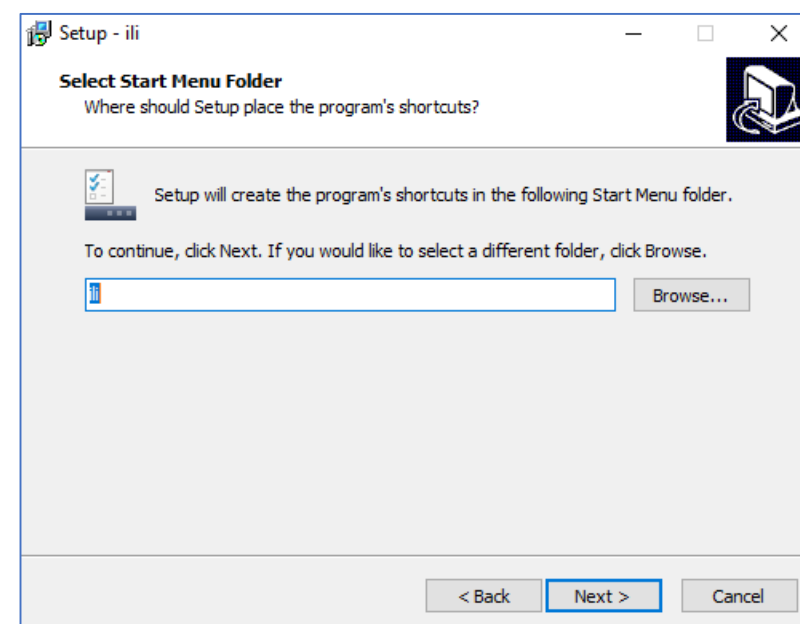
Select the language displayed in the installer.



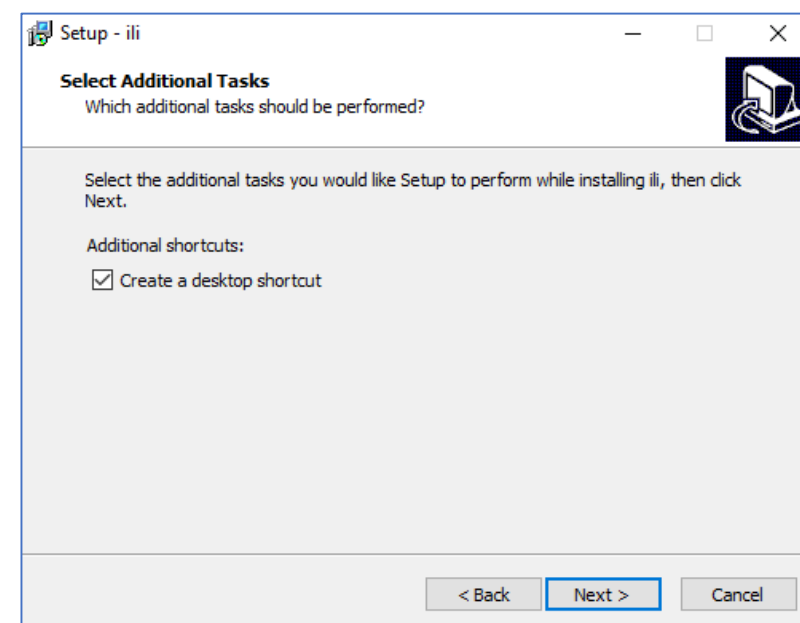
Select the install destination directory and click Next.



Select start menu folder and click Next.

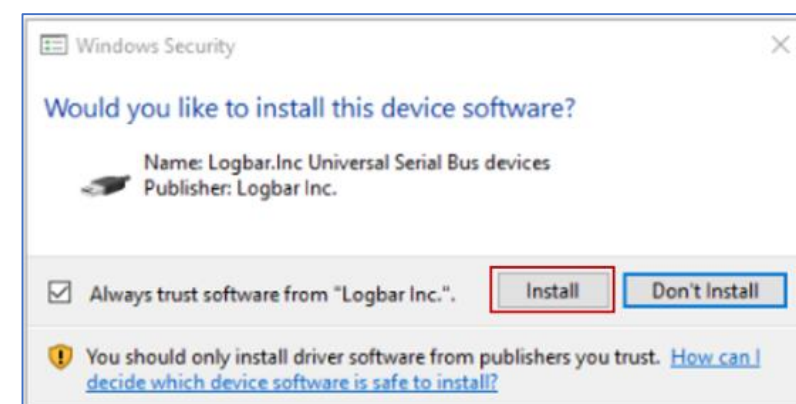
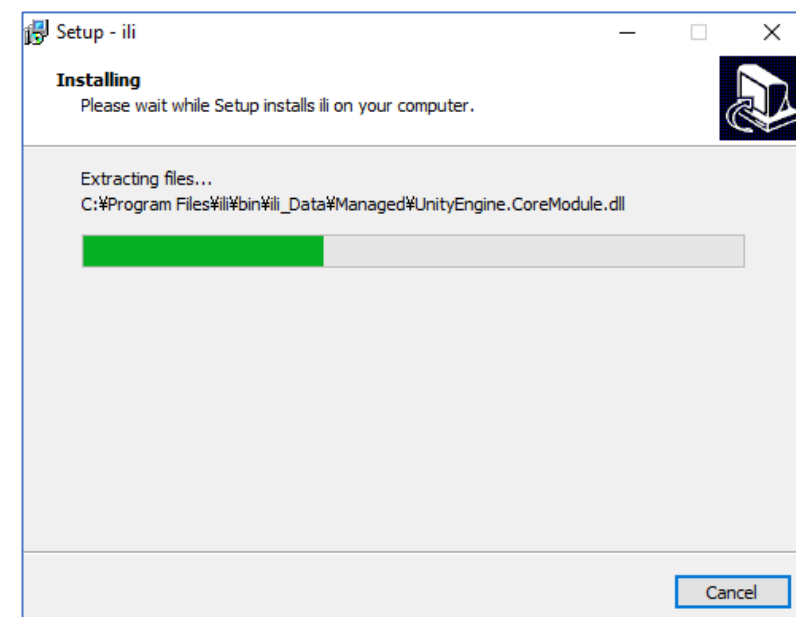
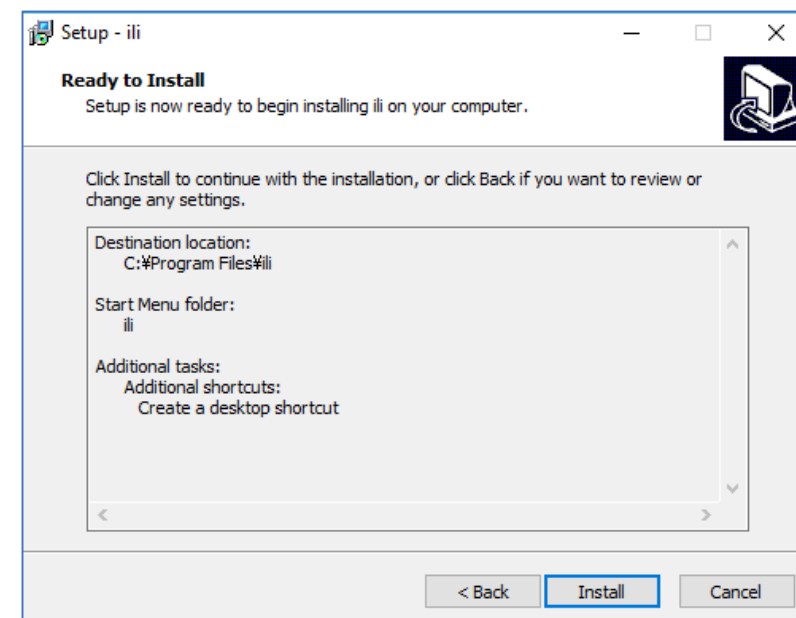


If you don't want to create the shortcut on your desktop, uncheck the checkbox. Click Next.



Review your installation settings.  
Click Install if the settings is OK, or you can back to the previous screen to modify the settings.

If you are installing this app for the first time, you will see the driver install screen during the installation process. The driver installer might show you the confirmation message.  
Click Install on the screen to the app recognize your ili correctly.



Complete installing ili app on your PC.

